

# PTC University Expert Model Analysis

Run an in-depth analysis of your CAD models and check for optimization potential

An analysis by PTC University Expert Model Analysis (XMA) will help you improve the modeling practices of your entire organization.

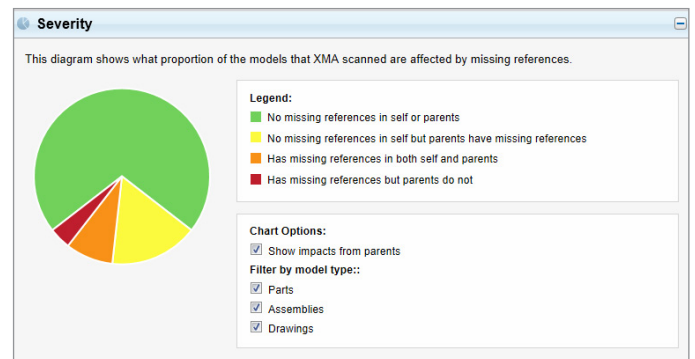
PTC University Expert Model Analysis (XMA) deepens your understanding of PTC Creo® Parametric™ models with the push of a button. The PTC University Expert Model Analysis technology has been available since 2011 and offered as a service to PTC customers. Following the requests of our customers, we have released XMA as a product - PTC University XMA Desktop.

## Improve your modeling practices

XMA assesses models in 50 areas of analysis around Geometry Quality, Design Intent Strength, and Model Complexity. Each assessment presents your results in a rich, graphical format and teaches you why the results matter. With XMA, you not only get the reports, but you get detailed information on what the findings mean and the impact that improvement can have to your overall productivity.

## Find the needle in the haystack

An XMA scan is bound to reveal surprises whenever you give it a large number of models. The modeling capabilities in PTC Creo Parametric are powerful and sophisticated, so it is easy to introduce unwanted characteristics and it can be difficult to identify these problems manually. XMA gives you a comprehensive view of potential issues with easy-to-read charts and spreadsheets that highlight outliers among your models.



XMA assess your models in over 50 areas and provides detailed reports including charts to help understand your data.

## Align teams and departments

You can use XMA to discover differences in the modeling practices between teams in your organization and discover the impact of poor modeling practices on downstream deliverables and models. With XMA, you will have the information you need to standardize your organization's modeling techniques and drive best practices through teams and departments.

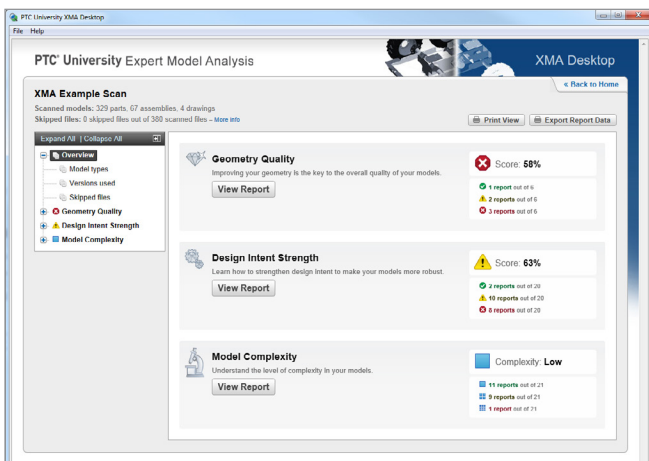
## Develop targeted optimization programs

The wealth of information generated by XMA allows PTC University experts to pinpoint where your practices need improvement and to work with you to find the consulting and training on CAD standards that best meet your needs and help prevent poor modeling practices. Whether it is user skill improvement, methods development, or Best Practice Academy Learning Programs, XMA will help PTC University tailor the right user and organization optimization strategy for your company.

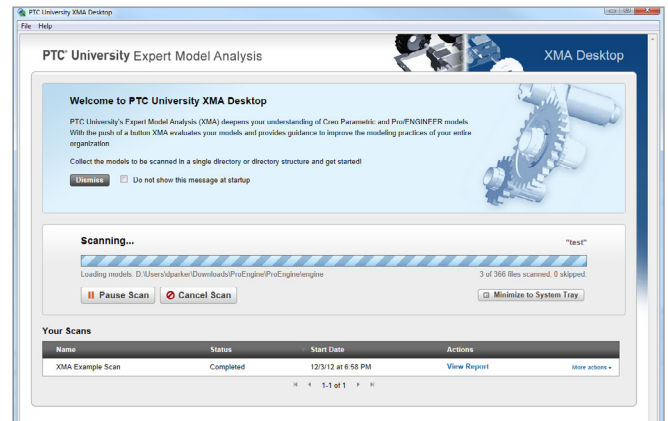
## Features

XMA has the capability to scan thousands of models at a time. Within each scan, XMA compiles 3 categories of reports. A total of 52 reports organized under Geometry Quality, Design Intent Strength, and Model Complexity. There are numerous additional features in each report including:

- Useful statistics on modeling practices
- Detailed explanations of the results
- Interactive charts highlighting hotspots and trends
- Correlations between issues in parents to help pinpoint root cause of an issue
- Ability to export results to Microsoft® Excel® for further analysis and problem solving



XMA organizes your results into three main categories and over 50 total reports.



XMA can scan thousands of models at a time.

## Get started with XMA

- See all [platform support and system requirements](#)
- Talk to a [Training Advisor](#)
- Download a free [30-day trial of XMA Desktop](#)

## PTC® University



© 2014, PTC Inc. All rights reserved. Information described herein is furnished for informational use only, is subject to change without notice, and should not be taken as a guarantee, commitment, condition or offer by PTC. PTC, the PTC logo, Product & Service Advantage, Creo, Elements/Direct, Windchill, Mathcad, Arbortext, PTC Integrity, Servigistics, ThingWorx, ProductCloud and all other PTC product names and logos are trademarks or registered trademarks of PTC and/or its subsidiaries in the United States and other countries. All other product or company names are property of their respective owners.

J4415-XMA DS -EN-1014